

PureGlow

PASSION IN DESIGN

FITTING GUIDELINES

Drayton 50" Limestone Fireplace

Hanley 48" Limestone Fireplace

54" Limestone Fireplace

Harvington 54" Limestone Fireplace

Wychbury 54" Limestone Fireplace

Kingsford 48" Limestone Fireplace

**PLEASE READ CAREFULLY BEFORE
INSTALLATION**

**THESE GUIDELINES MUST BE LEFT
WITH THE HOUSEHOLDER
AND RETAINED FOR FUTURE REFERENCE**

CUSTOMER INFORMATION SAFETY AND CARE SHEET

PLEASE KEEP FOR ANY FUTURE REFERENCE AND TO BE GIVEN TO ANY NEW HOUSEHOLDER.

Fireplace installation and servicing

- 1) All fireplaces must be installed by a qualified, competent and experienced installer complying to building regulations, British Standards and any rules in force.
- 2) Any down lights supplied with a fireplace must be installed by a qualified and approved electrician.
- 3) Servicing of down lights must be by a qualified and approved electrician.

Fireplace Safety

- 1) Only use your fireplace for the use it was intended.
- 2) Do not walk, climb, swing or sit onto the fireplace, or place any load to any fireplace part.
- 3) Do not allow children to play on the fireplace as this can be very dangerous. It is advised to use a full fire guard that is anchored to the wall that protects the complete fireplace whenever there are children in the room of installed fireplace.
- 4) Never place heavy objects onto the top of shelf, only light ornaments should be used and to be placed towards the rear edge of shelf.
- 5) Always use approved fire guards with any fires that have naked flames or are heat producing. It is a regulation that you must use an approved fire guard with children, the elderly and the infirm.
- 6) Never allow combustible articles to encroach onto the fireplace to any part, such as carpets and curtains etc.
- 7) Never use any combustible sprays, liquids, stone sealer's, or any other combustible product near to the fireplace when there are naked flames or any heat from your fireplace appliance.

Fireplace Care

- 1) It is advised that limestone fireplaces are sealed with an appropriate stone or marble sealer after installation, but only when the fireplace is completely clean, cool and dry. Contact your fireplace retailer for further advice.
- 2) Once the fireplace is sealed, there should only be the need for dusting. Dust with a soft colour fast cloth. Do not use any polish on limestone fireplaces.
- 3) Avoid dropping anything onto the fireplace as this will cause damage.
- 4) Avoid vacuum cleaners coming into hard contact with any part of the fireplace.
- 5) Avoid spillages onto the fireplace, if in the unfortunate event that a spillage occurs, soak up the spillage immediately with a soft colour fast cloth or sponge and then clean with a damp colour fast cloth. If there is any stain after the fireplace has dried, please contact your fireplace retailer for advice as some spillages can be acidic that can penetrate to the stone despite the use of stone sealer.
- 6) Ensure the fireplace is adequately protected when decorating as decorating materials can damage and stain the fireplace.

FITTING GUIDELINES

These guidelines to be left with householder and subsequently passed on to any new householder.

Important

- Please read all of these guidelines and diagrams before commencing any installation.
- This fireplace **MUST** be installed by an experienced, suitably qualified, and competent fitter.
- The fireplace installation is **NOT** recommended as a DIY or single person installation.
- The fireplace installation **MUST** be in accordance with Building Regulations, British Standards and any Rules in Force. Current Document J outlines various British Standards that cover all aspects of fireplace installation for England and Wales. The fixing of stonework is covered by BS 8298 "Code of practice for Design and Installation of Natural Stone Cladding and Lining.
- Make reference to the Stone Federation of Great Britain, guidance on fire surrounds.
(www.stonefed.org.uk)
- Reference must be made to all Building Regulations and any Rules In Force for areas outside of the UK such as Scotland and Southern Ireland.
- Should any conflict occur between these guidelines and any applicable regulations and any rules in force then the Regulations and Rules in Force shall apply.
- The fireplace installation **MUST** be in accordance with planning permission and local building control.
- Any solid fuel appliance installation completed in conjunction with this fireplace should be installed by a HETAS (GB only), registered installer or approved by your local building control officer.
- Any electrical connections made whilst fitting this fireplace should meet the requirements of Building regulations and any Rules in Force. The recognised independent body for electric is the National Inspection Council for Electrical Installation Contracting (NICEIC).
- Any gas appliance installation completed in conjunction with this fireplace must be completed by a Gas Safe registered gas engineer, in accordance with the gas fire manufacturer's instructions.
- Only install the fireplace to a solid brick chimney.
- If the fireplace cannot be permanently fixed to a solid brick chimney, such as block work, stud work, or any structure other than a solid brick chimney, then we recommend that you consult an architect or structural engineer for advice.
- All fireplace mechanical fixings must be stainless steel or at least galvanised steel and be totally corrosion and heat proof and of adequate size and strength to fix fireplace.
- The consequences of failure of a stone fireplace surround incorrectly installed and secured are extremely serious. It is essential that a fireplace surround is installed and secured to withstand foreseeable abuse such as a child pulling down on a cantilevered shelf.
- Always inform the user when the fireplace can be used for the first time taking into account of the full drying times for adhesives etc that have been used.
- Fixing brackets **MUST** be used.
- The fireplace **MUST** be completely adhered to the chimney brickwork with suitable adhesive. Such products should only be used for applications approved by the manufacturer. If there is any doubt, the adhesive manufacturer should be consulted.
- Gypsum based products is not recommended as an adhesive and should not be used.
- Never use adhesive alone to fit the fireplace.
- Brackets to be fitted against brickwork **NOT** plaster.
- All mechanical fixings to be chased into mounting wall brickwork to enable complete contact of all rear edges of fireplace to wall so a total bond can be made when also adhering fireplace to wall.
- Ensure all mechanical fixings do not obstruct total face to face contact of any fireplace mating parts.
- Use heat proof white or clear stone silicone adhesive between **ALL** mating stone pieces. (Ensure to protect fireplace visible stone surfaces from silicone over spill).

- **NEVER** drag mating stone pieces together when fixing, as this could chip and scratch the stone.
- Grouting of stone joints can be made by using white tile glue ensuring you wash of residue with clean water.
- It is recommended that after installation and when the fireplace has completely dried, that a suitable stone sealer is used to seal all visible stone surfaces.
- You **MUST** supply and fit, in correct position a data plate showing all correct information in accordance with building regulations and any rules in force.
- Ensure that purpose provided room ventilation is provided in accordance with building regulations and any rules in force.
- Ensure these fitting guidelines together with the fireplace customer care sheet are given to the customer. Subsequently these are to be passed on to any new home owner or occupier.

Important

Ensure the fireplace is fixed to the chimney wall safely and securely and fitted correctly to all regulations, British Standards and any rules in force. If this cannot be achieved

DO NOT FIT THE FIREPLACE.

Safety precautions.

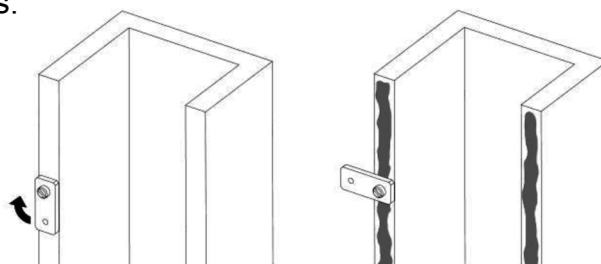
- Use all necessary safety clothing, for example:
- Suitable dust masks where there is a risk of dust contamination.
- Suitable protective gloves.
- Suitable Protective foot wear.
- Suitable Protective eye goggles.
- Never wear loose clothing or jewellery.
- Ensure long or loose hair is adequately protected, so as not to be a hazard when using tools etc.
- Ensure all fitting tools and equipment to be used are in good working order and safety approved and suitable for the use intended.
- Always comply with all Health & Safety regulations.
- This fireplace has parts that are irregular in shape and above 25kg in weight, therefore installation is recommended for more than one person or suitable lifting equipment to be used.

MECHANICAL/BRACKET FIXING

It is essential that the fireplace is installed using the supplied brackets and a suitable adhesive. Do not rely on adhesive alone to secure this product to the wall. With the exception of the hearth and back panel, all components feature a rotating plate on the rear face.

Before fitting the each component:

- Locate the plate on the rear face and slacken the screw by turning anti-clockwise until the plate is loose enough to be rotated. Then tighten the screw when the bracket has been correctly orientated as per the diagram below.
- Offer up the component to the wall in its intended installation position and mark the position of the bracket onto the wall.
- Chase out the wall to accept the brackets so that they will be flush once fastened – you may need to add some washers as spacers to accomplish this.
- Drill and plug the wall with appropriate fixings suitable for the wall type and secure the component in place (using adhesive also as described above). Make good any plasterwork to conceal the plates.

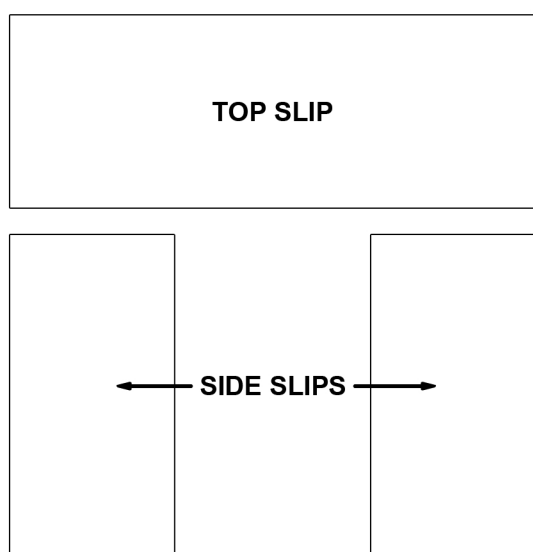


Fitting Guidelines.

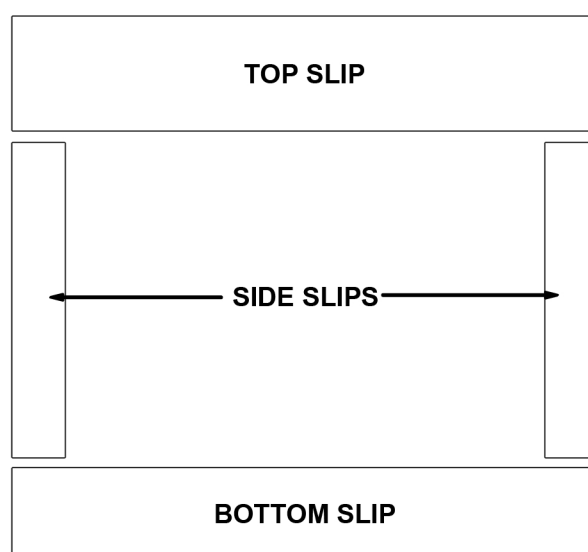
None of the fireplace components are sealed with stone sealer so you should seal all fixing areas before you begin. (Note: subject to adhesive manufacturer's instructions).

With suitable testing equipment check for live electrical cables or gas pipes and any other obstructions or connections that maybe obscured in the area of intended fireplace installation. If found use a suitably qualified person to remove and make safe. Remove all wall coverings and emulsion in area of intended fireplace installation. Ensure the chimney face is completely sound, dry, dust, grease and contamination free before fitting. In properties with traditionally plastered brick walls, the plaster can be cut back to enable the fireplace surround to be fixed directly to the brickwork behind. The plaster can then be made good around the fireplace surround. This is good practice as there will always be a risk of the fireplace surround becoming unstable should a failure of the plaster occur.

Slip Sets



3-piece slip set



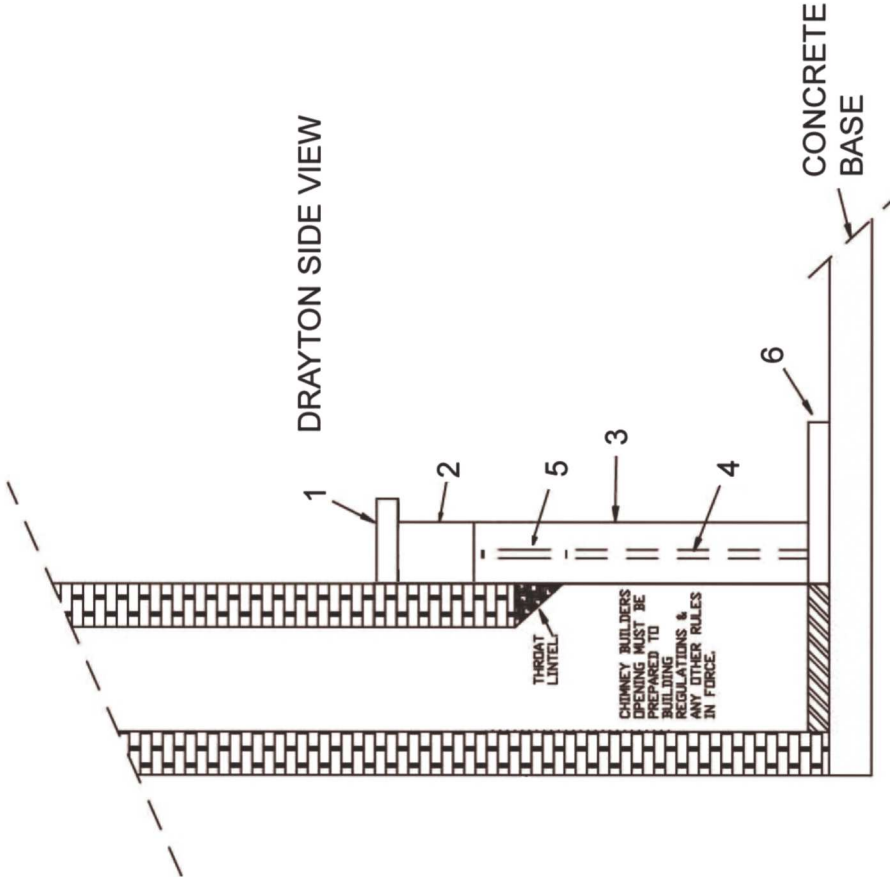
4-piece slip set

Three-piece Slip Set

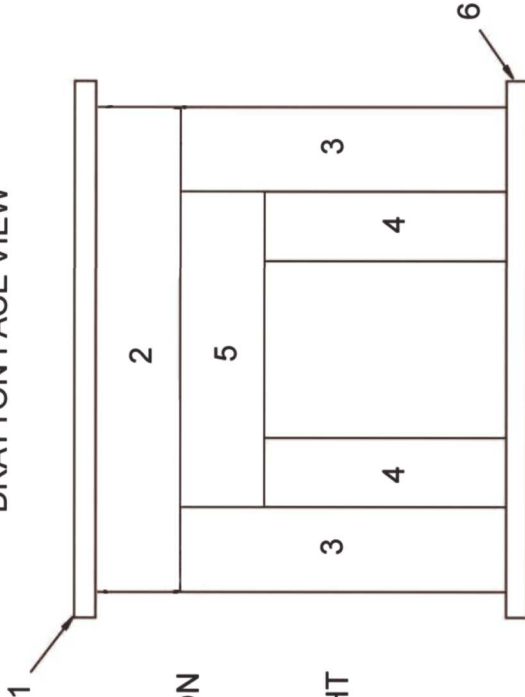
Place the slips behind the legs in the rebate between the inner leg and the wall. Start with the two side slips, ensuring that the opening distance meets the requirement for the appliance. Finally place the top slip onto the top of the side slips. You may use suitable adhesive to secure the slips to the fireplace, the wall and to one another. Spacers may be required behind the slips.

Four-piece Slip Set for Chelsea Fire (Gas & Electric models)

Place the slips behind the legs in the rebate between the inner leg and the wall. Start with the bottom slip (the smaller of the 2 horizontal slips), ensuring that it is central to the fire opening. Then position the two side slips on top of the bottom slip, ensuring that the opening distance meets the requirement for the appliance. Finally place the top slip onto the top of the side slips. You may use suitable adhesive to secure the slips to the fireplace, the wall and to one another. Spacers may be required behind the slips.

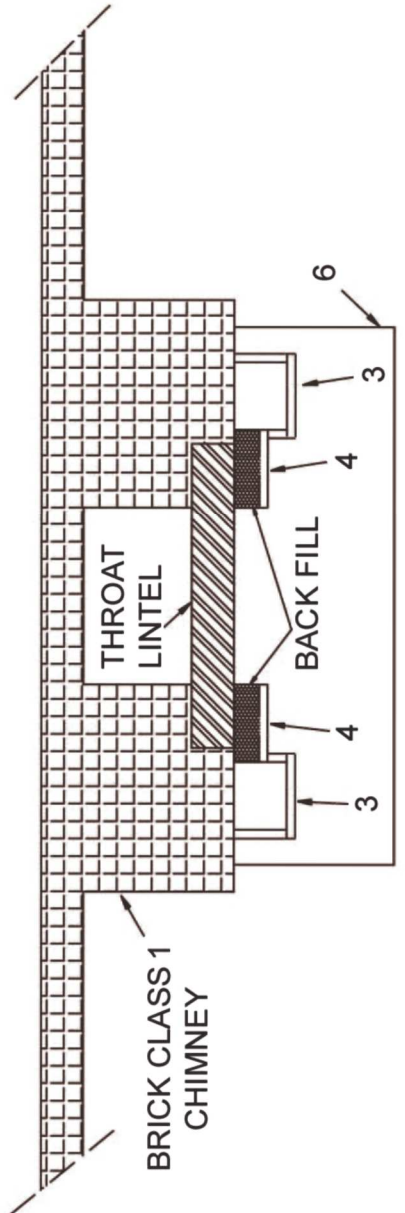


DRAYTON FACE VIEW

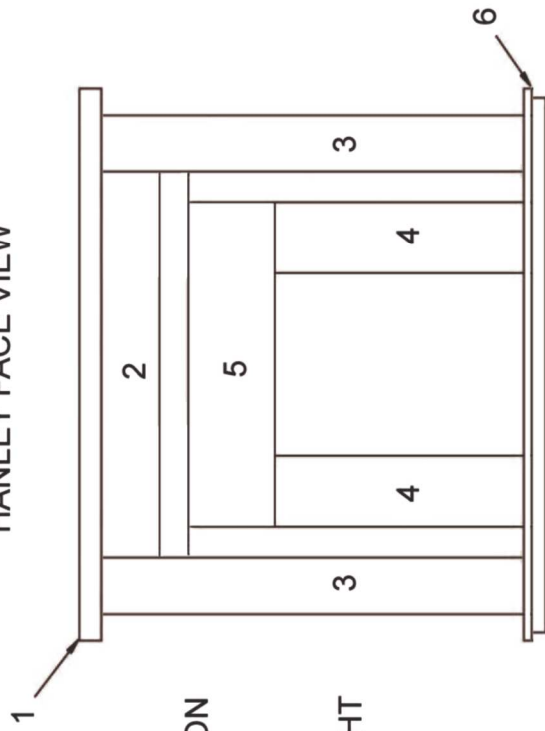


PARTS IDENTIFICATION

- 1 - SHELF
- 2 - TOP HEADER
- 3 - LEGS, LEFT & RIGHT
- 4 - SIDE SLIPS
- 5 - TOP SLIP
- 6 - HEARTH



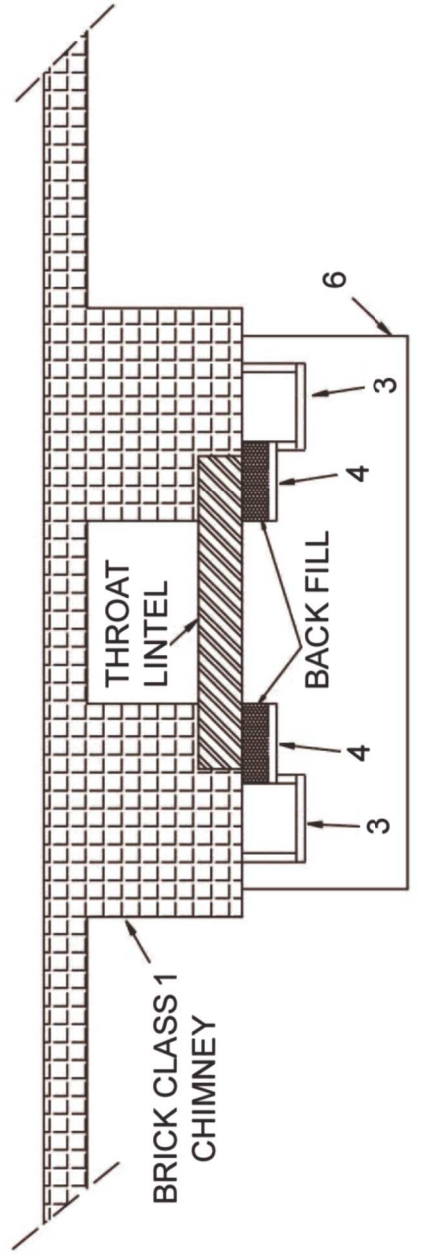
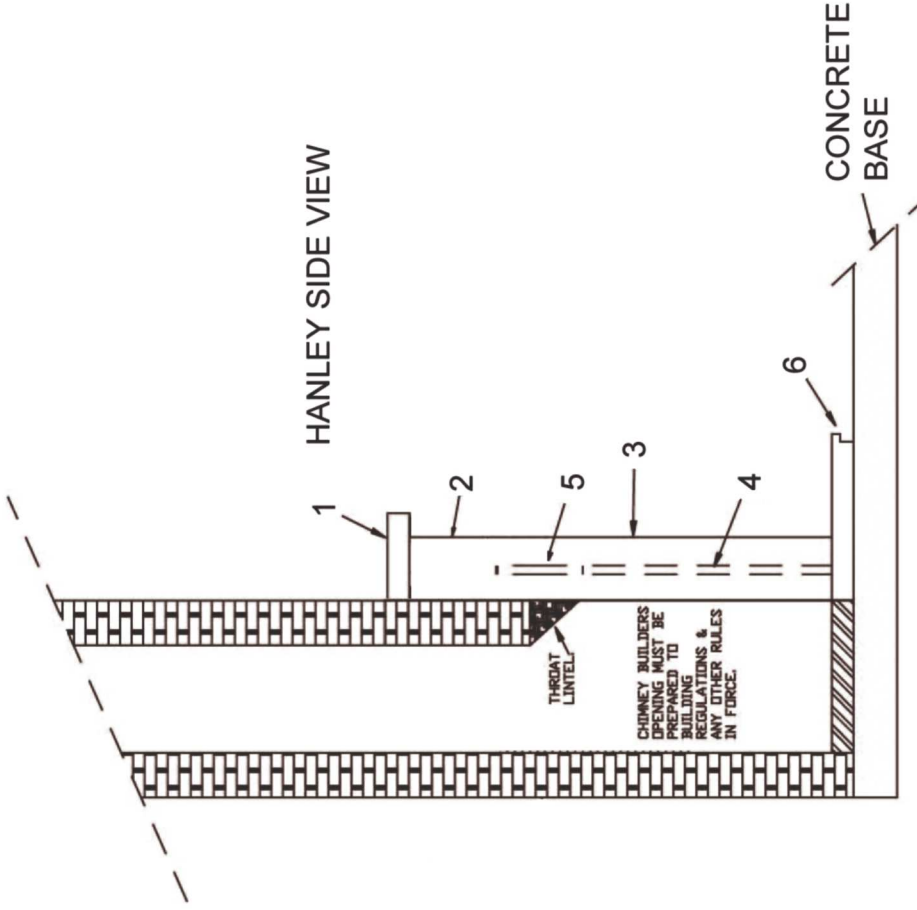
HANLEY FACE VIEW

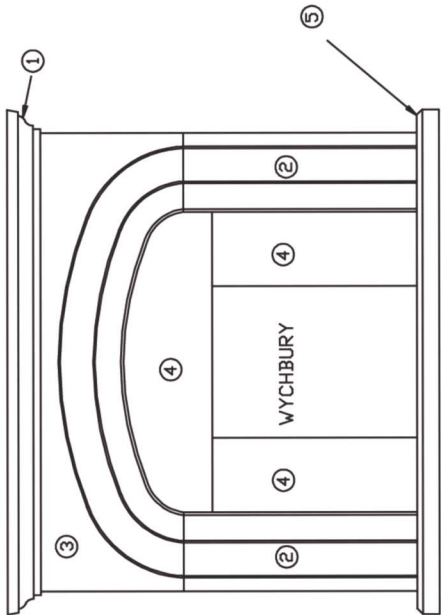


PARTS IDENTIFICATION

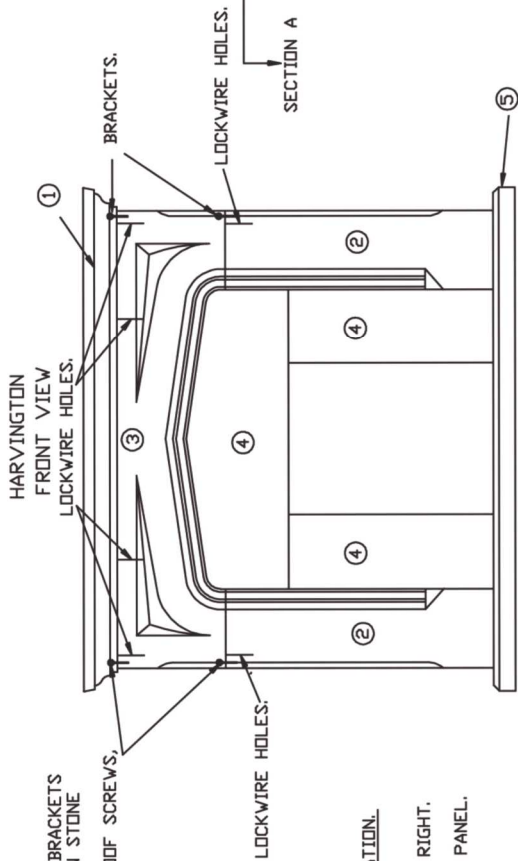
- 1 - SHELF
- 2 - TOP HEADER
- 3 - LEGS, LEFT & RIGHT
- 4 - SIDE SLIPS
- 5 - TOP SLIP
- 6 - HEARTH

HANLEY SIDE VIEW



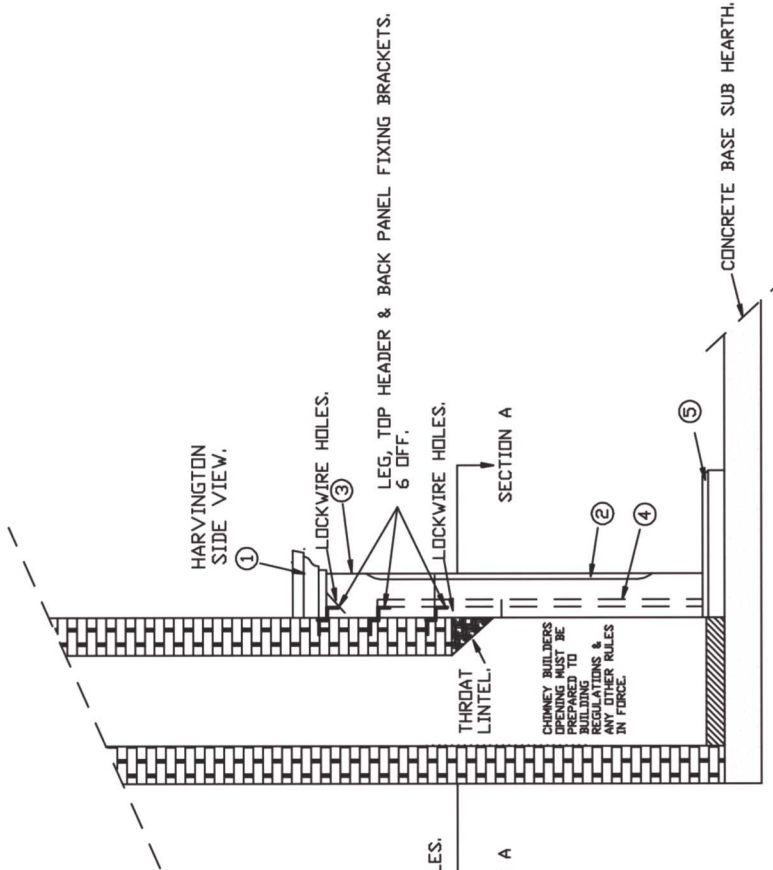


LEG & TOP HEADER SHAPED BRACKETS
GLUE INTO HOLES & SLOTS IN STONE
PROVIDED.
USE SUITABLE CORROSION PROOF SCREWS,
WASHERS & WALL PLUGS
TO SECURE FIRMLY TO WALL.
SEE SIDE VIEW.

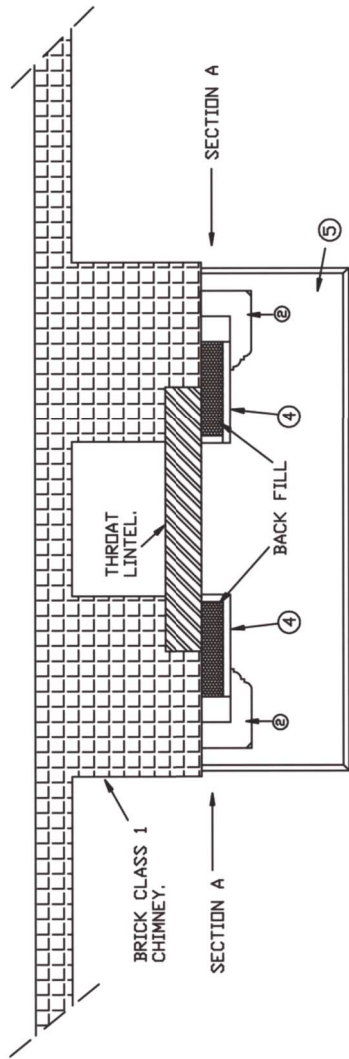


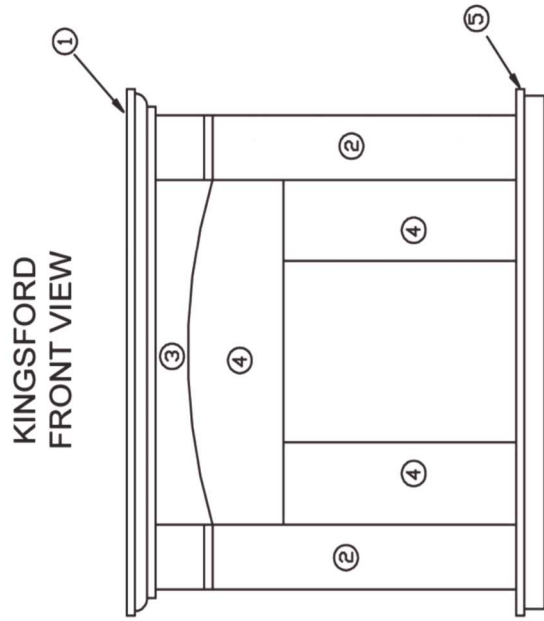
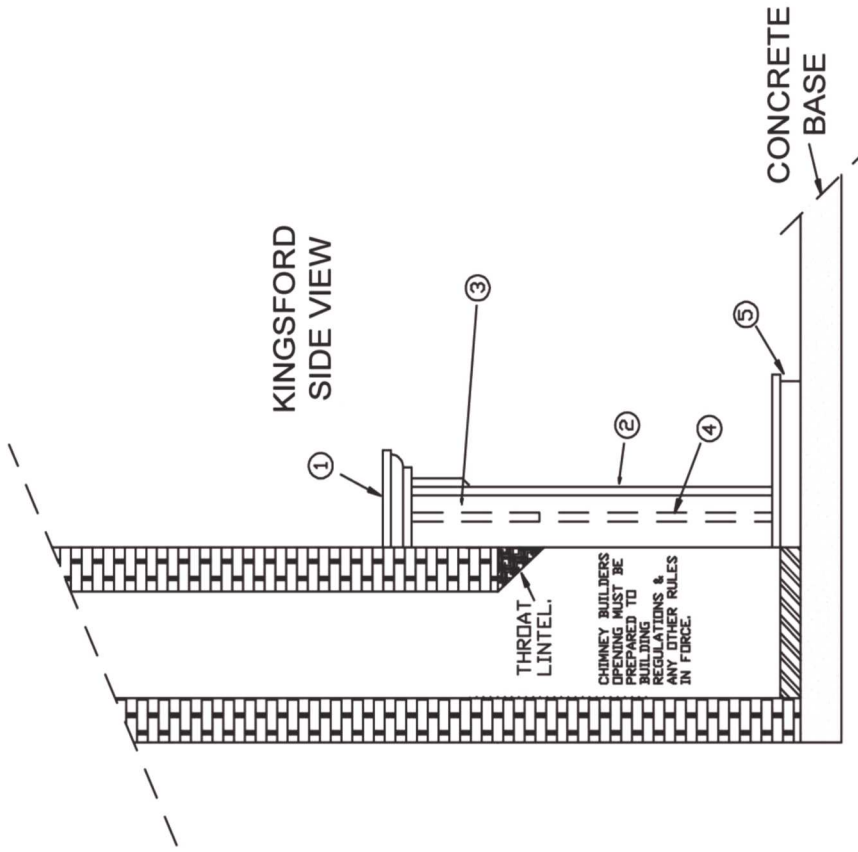
PARTS IDENTIFICATION.

- 1) SHELF.
 - 2) LEGS, LEFT & RIGHT.
 - 3) TOP HEADER.
 - 4) 3 PIECE BACK PANEL.
 - 5) HEARTH.
- BRACKETS X 4.



HARVINGTON
PLAN VIEW SECTION A-A.





PARTS IDENTIFICATION

- 1 - SHELF
- 2 - LEGS
- 3 - ARCH
- 4 - TOP & SIDE SLIPS
- 5 - HEARTH

